



# SHORT-TERM RENTAL MATERIAL PARTICIPATION STRATEGY GUIDE

*How to convert short-term rental losses into non-passive deductions that offset W-2 and business income*



Powered By *DOC*  
TaxMD™ AI

 1-800-522-6091

 [info@taxmd.com](mailto:info@taxmd.com)

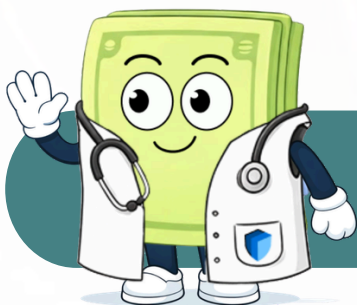
 [www.taxmd.com](http://www.taxmd.com)

# Executive Summary

The Short-Term Rental (STR) Material Participation strategy allows qualifying property owners to treat short-term rental activity as a non-passive trade or business rather than a passive rental activity.

Under IRS rules, properties with an average guest stay of seven days or less are not treated as traditional rental activities for Passive Activity Loss (PAL) purposes. If the taxpayer materially participates in operating the property, losses — including accelerated depreciation from cost segregation — may offset other active income such as W-2 wages or business profits.

For high-income earners, this strategy can significantly reduce taxable income while maintaining ownership of an appreciating real estate asset. This guide explains how the strategy works, eligibility requirements, material participation tests, risks, and how to integrate it into a broader tax plan.



I'm Doc, here to guide you along the way and show you how TaxMD™ can help put these strategies into action.

-DOC

# Table of Contents

	Who This Guide Is For	Page 4
<b>1</b>	What Is a Health Savings Account	Page 5
<b>2</b>	The Triple Tax Advantage	Page 6
<b>3</b>	Eligibility Requirements	Page 7
<b>4</b>	How It Applies to You	Page 8
<b>5</b>	Qualified Medical Expenses	Page 9
<b>6</b>	Key Risks and Compliance Considerations	Page 10
<b>7</b>	Strategic Planning Considerations	Page 11
<b>8</b>	Estimated One-Year Savings	Page 12
<b>9</b>	Next Step Checklist	Page 13
<b>10</b>	How TaxMD™ Helps You Optimize HSA Strategy	Page 14

# Who This Guide Is For

This guide is designed for:

- High-income W-2 earners
- Business owners with active income
- Real estate investors acquiring short-term rentals
- Taxpayers seeking real estate tax benefits without qualifying for Real Estate Professional Status

# What Makes Short-Term Rentals Different

Under IRC §469, most rental real estate activities are treated as passive. However, short-term rentals with an average stay of seven days or less are not classified as rental activities for PAL purposes.

Instead, they are treated as a business activity.

This distinction allows income and losses to be treated as non-passive if material participation is met.



Using your real numbers, TaxMD™ shows you how much this short-term rental strategy could actually save you, especially if it lets you use losses to reduce other income.

-DOC

# Qualification Requirements

## 1. Average Stay Requirement

The property must meet one of the following:

- Average guest stay of seven days or less, or
- Average stay of 30 days or less where substantial services are provided (such as cleaning between stays, concierge services, or meals)

If the average stay exceeds these thresholds, the property is generally treated as a passive rental.

## 2. Material Participation Requirement

The taxpayer must meet at least one of the IRS's seven material participation tests. Common qualifying tests include:

- 500-hour test: The taxpayer participates in the activity for more than 500 hours during the year
- Substantially all participation test: The taxpayer performs substantially all the work
- 100-hour and more-than-anyone-else test

Participation may include:

- Guest communication
- Booking management
- Maintenance coordination
- Cleaning oversight
- Vendor management
- Operational decision-making

Detailed time logs are critical.

# How the Strategy Works

When both the average stay and material participation tests are met:

- Income is treated as non-passive
- Losses are treated as non-passive
- Depreciation and bonus depreciation may offset active income

This allows high earners to reduce W-2 or business income using real estate deductions.

## Example Scenario

A taxpayer earning \$300,000 in W-2 income purchases a short-term rental property for \$800,000.

A cost segregation study identifies \$200,000 in bonus-depreciable components.

If the taxpayer materially participates:

- The \$200,000 depreciation loss becomes non-passive
- It offsets W-2 income
- At a 35% marginal tax rate, tax savings could exceed \$70,000

Without material participation, those losses would be suspended as passive losses.

# How It Applies to You

## Real Estate Investor

If you actively manage your STR:

- Depreciation can offset earned income
- Cash flow improves
- Return on investment increases

## Business Owner or Professional

You can access real estate tax benefits without qualifying for Real Estate Professional Status.

This strategy is often more achievable than REPS for professionals with full-time careers.

## Eligibility Summary

You must:

- Own the property
- Meet short-term average stay thresholds
- Materially participate in operations
- Maintain documentation
- Properly place the property in service

# Estimated 1-Year Tax Impact

## Savings depend on:

- Property value
- Allocation from cost segregation
- Bonus depreciation availability
- Marginal tax rate
- State tax treatment

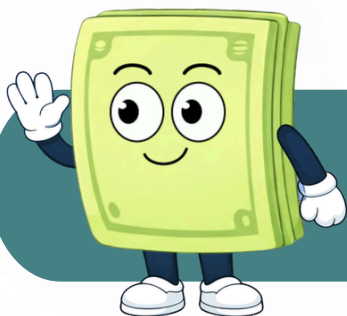
## Example:

\$100,000 non-passive loss

35% marginal rate

Estimated federal tax reduction ≈ \$35,000

Actual savings vary by facts and circumstances.



Log in to your TaxMD™ workspace to see how your property, depreciation, and tax rates could really impact your savings.

-DOC

# Key Risks and Documentation

## **Material Participation Risk**

Failure to meet participation tests results in passive classification and suspended losses.

## **Average Stay Risk**

If the guest stays exceed seven days on average, the property may be reclassified as passive.

## **Documentation Risk**

Maintain:

- Detailed hour logs
- Booking records
- Vendor invoices
- Guest communications

## **Cost Segregation Risk**

Studies must be conducted by qualified professionals.

## **Audit Risk**

Large non-passive losses attract IRS scrutiny.

## **State-Level Differences**

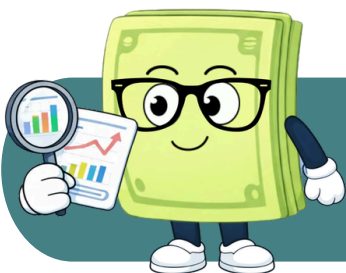
Some states follow different passive activity rules.

## **Reclassification Risk**

If the IRS determines insufficient participation, losses are suspended.

# Assumptions

- Average stay is seven days or less
- Material participation tests are satisfied
- Cost segregation is properly performed
- Property is placed in service
- Accurate logs are maintained



We have more guides and videos that help you dive into some of these other topics, like cost segregation, and see how it all fits in with your plan.

-DOC

# Strategic Planning Opportunities

## **Combine with Cost Segregation**

Maximize early-year deductions.

## **Aggregation Strategy**

Multiple STRs may be grouped to meet participation tests.

## **Entity Structuring**

Use an LLC for liability protection and administrative clarity.

## **Long-Term Planning**

Coordinate with:

- 1031 Exchanges
- Real Estate Professional Status
- Estate planning strategy



Login to TaxMD™ to evaluate, review, and coordinate all of these things using your real numbers, so every decision is based on your actual financial picture.

# Next Step Checklist

## Immediate (Next 7 Days)

- Confirm average stay calculation
- Begin tracking participation hours
- Review management involvement

## Implementation (Days 8–30)

- Engage cost segregation specialist
- Organize documentation
- Coordinate with CPA

## Ongoing (Annually)

- Maintain time logs
- Recalculate average stay
- Monitor depreciation schedules
- Reassess material participation thresholds



Need a detailed tracker? Login to your TMD™ workspace to track your progress, and see the tax savings from each strategy.

-DOC



Tax Engine



#AVATAR 2  
Business Owner



Entity Structuring



#AVATAR 1  
Real State Investor



#AVATAR 5  
Retiree



#AVATAR 6  
W-2 Employee



#AVATAR 3  
Side Hustler



Event Driven Planning



# How TaxMD™ Helps You Model This Strategy

TaxMD™ allows you to:

- Model non-passive loss impact
- Compare STR vs traditional rental classification
- Evaluate cost segregation scenarios
- Track participation requirements
- Project multi-year tax outcomes


The STR Material Participation strategy is powerful, but only when compliance is precise and documentation is disciplined.



Powered By *DOC*  
TaxMD™ AI



[www.taxmd.com](http://www.taxmd.com)

 1-800-522-6091

 [info@taxmd.com](mailto:info@taxmd.com)

 [www.taxmd.com](http://www.taxmd.com)